



Helping Cancer Patients with Chronic Pain
Creating Ethical Shareholder Value

Investor Presentation | August 2021



CBD Science Group will research, develop and make available, commercially effective and affordable plant-based cannabinoid medicines specifically for treating patients suffering from **cancer related pain** in the UK.

Investment Opportunity

Series A raise of **£2 Million** at £0.50 per share on a £10.8 million pre-funding market valuation.

“Helping Humanity find a long-term solution for pain management using plant-based cannabinoid medicines.”

Dr. Michael Raymont
CEO, CBD Science Group PLC



Highlights

Helping Cancer Patients with Chronic Pain

- 3,000,000 people are currently suffering from cancer in the UK
- 1000 patients diagnosed daily
- 33% of those who suffer from pain associated with cancer are undertreated

CBD Science Group PLC has identified this **unmet medical need** and have initiated Real World Evidence (RWE) clinical trials.

Creating Shareholder Value

Creating Shareholder Value

Every 1000 patients treated has the potential to generate £3.6 million in annual revenue for **CBD Science Group PLC**. Comparable companies are trading up to 80 times revenue.

Marketing Potential

- a. Total Medicinal Cannabis Market Value forecasted at £7.7 Billion by 2028
- b. "1.4 million Britons are using street cannabinoids to treat their illnesses" - following recent survey, giving potential for tested and safe products.^[3]
- c. GW Pharma, the largest UK based cannabinoid company, as a comparable has most recently sold to Jazz Pharmaceuticals for \$7.2bn.^[3]



Contents

Disclaimer	06
Executive Summary	07
The Team	
Leadership Team	08
Clinical Advisory Board	
Strategy	
Market Opportunity In the UK	09
Helping Cancer Patients with Chronic Pain	10
Novel Technology to Enhance Patient Care	11
Endorsements and Key Partnerships	12
Changing the Landscape	13
Clinical Trials Supported by Real-World Evidence (RWE)	14
Material Progress to Initiate Pharma Revenue	16
Clinical Trial Set up and Distribution	
Financial Projections	
Revenue from Patient Usage	17
Product Price Comparables	18
Projected Market Valuation	19
Use of Proceeds	20
Investor Contact	21



Disclaimer

Cautionary Note and Forward-Looking Statement

This presentation is confidential and is being supplied to you solely for your information and may not be reproduced or distributed to any other person or published, in whole or in part, for any purpose. No reliance may be placed for any purpose whatsoever on the information contained in this presentation or the completeness or accuracy of such information. No representation or warranty, express or implied, is given by or on behalf of CBD Science Group PLC (the “Company” or “CBD Science”, or its shareholders, directors, officers or employees or any other person as to the accuracy or completeness of the information or opinions contained in this presentation, and no liability is accepted for any such information or opinions.

Statements in this presentation that are not statements of historical or current fact constitute “forward looking statements” within the meaning of the UK securities laws. Such forward-looking statements involve known and unknown risks, uncertainties and other unknown factors that could cause the actual results of CBD Science to be materially different from historical results or from any future results expressed or implied by such forward-looking statements. In addition to statements which explicitly describe such risks and uncertainties, readers are urged to consider statements labeled with the terms “believes,” “belief,” “expects”, “intends,” “anticipates,” “will,” “should,” or “plans” to be uncertain and forward-looking. Readers are cautioned not to place undue reliance on these forward-looking statements, which speak only as of the date of this presentation. Forward-looking information in this presentation includes, but is not limited to, information or statements about our ability to successfully develop, produce, supply, promote or generate any revenue from the sale of any cannabinoid-based products.

Leadership Team



Dr. Michael Raymont
Chief Executive Officer
MBA

Mike's depth of experience in entrepreneurship, venture capital and government relations is evident by his past leadership of AVAC, Canada's largest Agri-Tech venture capital fund. Key achievements include serving at the Deputy Minister levels of the federal government where he was initially Vice President, Technology and Industry Support of the National Research Council of Canada and later acting President.



Graeme McFarlane
Chief Commercial Officer
MBA

30+ years in the pharmaceutical industry holding senior management positions in Astra Zenca, GlaxoSmithKline and Bristol Myers before starting B2B companies specializing in Pharma Market Access, his most recent having been sold to IQVIA. A keen entrepreneur, Graeme enjoys growing companies and has a special interest in advancing healthcare. Focused on unmet needs and patient centred solutions.



Barney Neal
Chief Operating Officer
MEng

Barney is a product & marketing entrepreneur focussing his efforts to enable access to life changing plant medicines for patients in need. Barney has worked closely with the Conscious Fund, a Venture Capital Fund focused on cannabis & psychedelics. Barney is also a founder of the Psychedelic Medicine Association and holds a Masters degree in Engineering.



Rob Kang
Chief Financial Officer
CPA, CA

25+ years of public practice and company management advising corporations and their executives on financing, mergers and acquisitions, going public transaction, continuous disclosure obligations, and corporate governance. Rob spent 15 years as the Director of Listings for the TSX Venture Exchange. Rob also has extensive knowledge and expertise in Venture Exchange practices, policies, regulatory compliance and risk mitigation.



Professor Mike Bewick
Chief Clinical Advisor
MB.BS, MRCP, MRCPG, FRCGP,
FRCP

Mike is the former Deputy Medical Director at NHS England and has wide-ranging experience including planning, commissioning and providing services, leading clinical management teams on a local, regional and national basis. Mike has also advised on policy for NHS England to the Secretary of State and government ministers.

Clinical Advisory Board



Professor Sam Ahmedzai
FRCPGlas, FRCP, FRCPE

Professor Sam Ahmedzai is the NIHR National Specialty Lead for Cancer: Supportive Care and Community-Based Research. He was a professor of supportive and palliative care at the University of Sheffield for 20 years. Sam is also the Chair of the National Cancer Research Institute (NCRI) Supportive and Palliative Care Clinical Studies Group.



Dr. Barry Laird
MRCGP, MBCHB, MD

Dr. Barry Laird holds positions as Senior Lecturer in Palliative Medicine at the University of Edinburgh and is a consultant in Palliative Medicine in Edinburgh Cancer Center and St Columba's Hospice. He leads a research programme examining the systemic inflammatory response in cachexia, symptom genesis, pain and prognosis in cancer. He has over 100 papers published.



Dr. Paul Farquhar-Smith
MA, MB, BChirFRCA, PhD,
FFPMRCA, FFICM

Dr. Paul Farquhar-Smith is a consultant in Pain Management and Anaesthetics at the Royal Marsden NHS Foundation Trust, London. He has a specific interest in pain in cancer survivors. Paul runs the only dedicated CIPN clinic in the country. Paul was also integral in the development of the Pain Database for the UK. Interestingly, he also has a committed interest in the role of medicinal cannabis in cancer related pain having based his PhD on this topic.



Professor Saoirse O'Sullivan
BA Mod Hons, PhD

Saoirse is a Professor of Pharmacology in the Faculty of Medicine & Health Sciences at the University of Nottingham. Dr. O'Sullivan is a leading researcher in the field of cannabinoid research and was awarded the title of International Cannabinoid Research Society Young Investigator of the Year in 2016. She has published numerous papers on the role of cannabinoid receptors in health and disease.



Professor Mike Bennett
FFPMRA, FRCP, MD (Hons), MBCHB

Mike is the St. Gemma's Professor of Palliative Medicine and works clinically as a consultant at St Gemma's Hospice in Leeds. Mike has chaired the National Cancer Research Institute palliative care studies group from 2008 and has chaired scientific and organizational committees for several research congresses of the European Association for Palliative Care (EAPC).

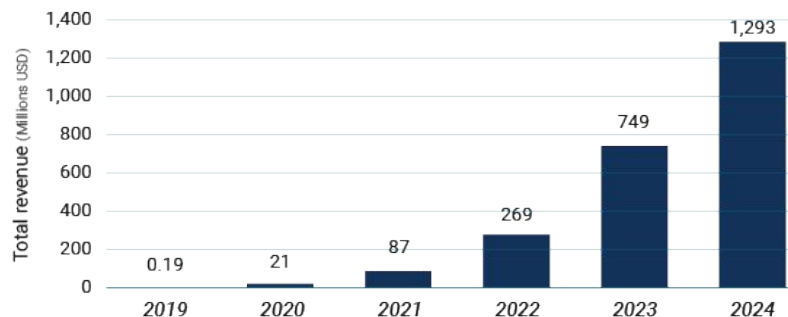
Market Opportunity in the UK & Europe

UK Market

- Medicinal cannabis is legal in the UK as of November 2018.^[1]
- 28 million people in the UK suffer from chronic pain.^[2]
- Over 50% of adults reported that they had a pain condition.^[2]

“Prohibition Partners forecasts the UK legal cannabis market to reach £2.31bn by 2024”... 13th January 2020^[3]

Annual medical cannabis market revenue in the UK 2019-2024^[5]



Source(s): Prohibition Partners; ID1088474
Market Overview.

statista

“The Europe cannabis market is expected to reach US\$ 36,997. 1 million by 2027 a growth at a CAGR of 29. 6%”... 13th January 2020^[4]

Changing Perspectives

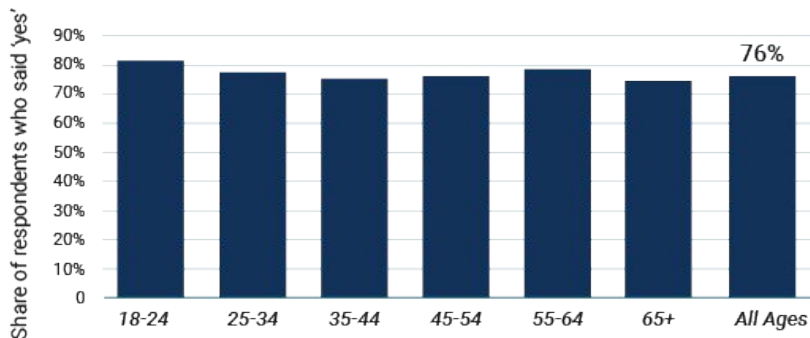
UK Perspectives

- Only 5% of surveyed respondents would not consider using Cannabis Based Medicines.^[6]
- 76% of respondents would take cannabis-based medicines if prescribed.^[7]
- 1.4 m people are using illicit cannabis for medical problems.^[7]



69% are not concerned that cannabis-based medicines will have negative consequences for society (17% are concerned)^[7]

Would you take Cannabis-Based Medicines if prescribed your doctor?



Source(s): Populus; ID 976877
Note(s): UK, 18+, 2,065 Respondents

statista

Helping Cancer Patients with Chronic Pain

Unmet Medical Need

Opioids are Suboptimal for many Patients



3,000,000 cancer patients in the UK



66% suffer from chronic pain



33% undertreated with opioids



650,000 patients have unmet medical needs

Untreated Pain has a profound impact on **Quality of Life**.



CBD Science has launched its RWE Trial

- Reputable Clinical Advisory Board lead by former NHS Deputy Medical Director
- Clinical Trial protocols peer-reviewed
- Highly sought-after Key Endorsements

National Cancer Research Institute – NCRI

Royal Marsden Trust – Europe's Leading Cancer Centre

Medicines & Healthcare Product Regulatory Agency- MHRA

Patient recruitment to commence Q3 2021

Endorsement and Strategic Relationships

Endorsement from Key Stakeholders

MHRA – Medicines Healthcare Regulatory Agency
NWEH – North-West EHealth
NIHR – National Institute for Health Research
NCRI – National Cancer Research Institute

Supply Chain Logistics for Pharma Grade

Prados – European arm of CBD Science Group
Albert Labs - www.albertlabs.com

Commercial Agreement Executed with Lexon

Home Office Import/Export License
Specials License (includes Schedule 2 Drugs)
Compounding, Testing, Packaging, and Distribution

Physician/Patient Outreach Program

Professional education program developed through Clinical Advisory Board, Sponsor & organize physician and patient seminars



The ROYAL MARSDEN
NHS Foundation Trust

Novel Technology to Enhance Patient Care

Wearable Technology to collect Real World Data

- Using Smart Watches to help capture data from clinical trials
- Implement immediate diagnostics algorithms to alleviate suffering
- Monitor positive and adverse effects on patient by patient basis

Possibilities available using the FITBIT Versa

- Ability to Facilitate Patient Communication
- Remind Patients to Take Medication
- Heart Rate Monitoring
- Activity Tracking
- Sleep Stage Monitoring
- Ability to Solicit Patient Feedback
- Ability to Analyze and Report Data

Data can be captured on intervals or on a trigger of an event.

For example: The request for pain levels can be sent before medication is taken and then 2 hours after, or the request can be sent every week.



Wearable Technology to collect Real World Data

- Using Smart Watches to help capture data from clinical trials
- Implement immediate diagnostics algorithms to alleviate suffering
- Monitor positive and adverse effects on patient by patient basis

Changing the Landscape

Barriers To Entry

CLINICAL – Lack of peer reviewed evidence to support the use of cannabinoids in target disease areas.

SOCIAL – Stigma attached to recreational marijuana use and its association with criminality and side-effects.

EDUCATION – Understanding of the cannabinoid system is low due to late arrival of cannabis in the healthcare system

REGULATORY – Medicinal cannabis has been legal since November 2018 but access is limited and can only be prescribed by specialist doctors

Our Pathway To Change

Through our partnership with the National Institute for Health Research (NIHR), conduct Real World Evidence (RWE) Studies

Clinical evidence through RWE work and extensive public relations campaign through our clinical advisory board and partners.

Physician and patient Outreach Programs. Investment with other cannabis companies and industry groups to educate clinicians and patients.

Secure patient access and improve guidelines via the Real World Evidence Studies and engage with Patient Advocacy Groups.

Clinical trials supported by Real World Evidence (RWE)

What

RWE trials are conducted on diagnosed cancer patients suffering from chronic pain. Patient level Clinical Evidence is used to assess the value of treatments based on actual health outcomes.

Why

- Real World Setting (Diagnosed Patients Hospital Research Centers)
- Diverse Group of Patients
- Reduced Costs
- Real Time Data
- Speed to Market
- Motivated Patients and Clinicians to address this Unmet Medical Need

Outcomes that generate revenue



Clinical Evidence from
Cancer Patients treated in
Hospitals



Paid Patient Acquisition
from Ongoing Treatment

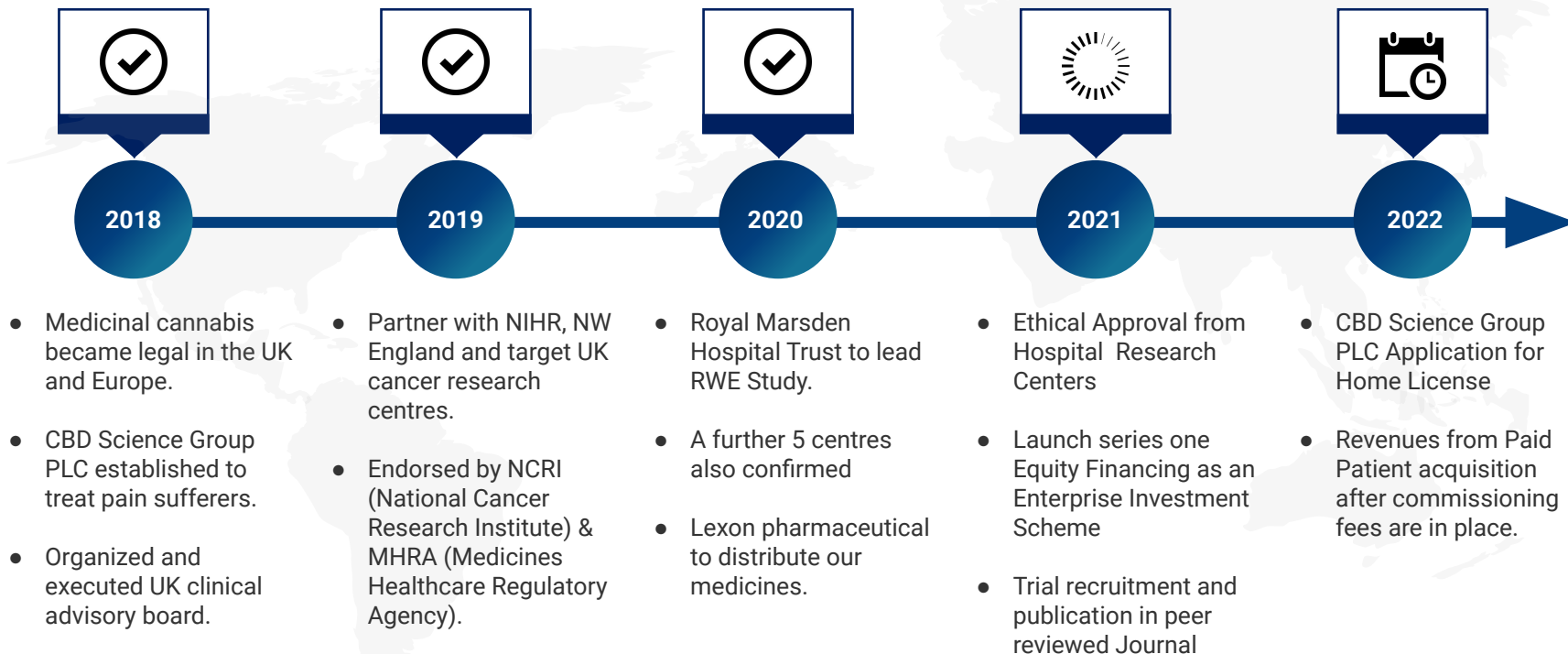


Peer Reviewed
Medical Journals



Revenue from
RWE Trials

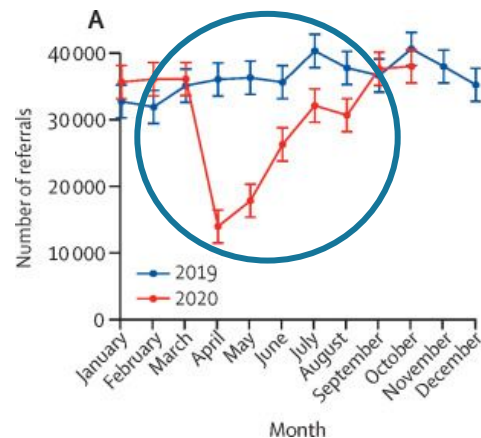
Material Progress to Initiating Pharma Revenue



Covid Impact

There is significant concern that the reorganisation of the National Health Service (NHS) in the UK in response to the COVID-19 pandemic has had a strongly negative effect on the management and outcomes of cancer. As more patients unfortunately have their cancer therapies delayed the need to manage their symptoms of pain is greater than ever.

Throughout the pandemic clinical research has been hugely limited with a substantial number of clinical trials grinding to a halt. However, with a clear vaccination plan the UK will soon be in a position to continue clinical research. The CBD Science team are poised to continue our study. Detailed plans have been put in place inline with the framework laid out by the NIHR.



Monthly number of cancer referrals 2020 vs 2019 in the UK. ^[9]

Clinical Trial Set up and Distribution

Distribution Sites

- Redditch
- Leeds
- Durham
- Dublin



Hospital Research Centres

Confirmed

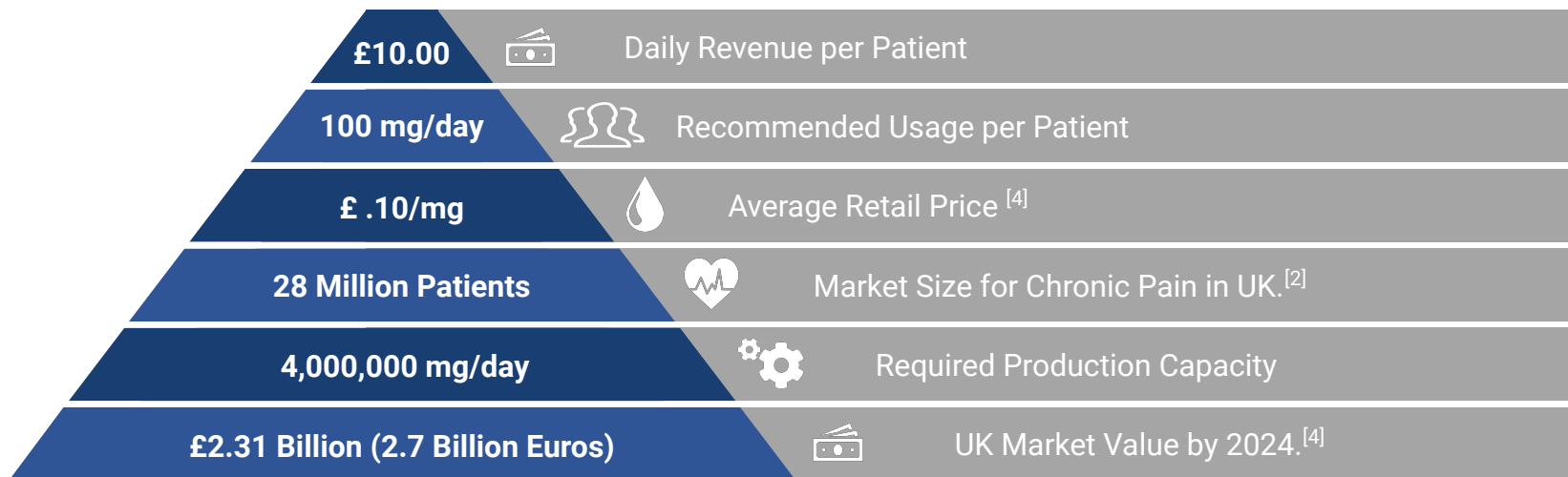
- Royal Marsden
- Birmingham
- Manchester
- Belfast
- Leeds

In Discussion

- Glasgow
- Cardiff
- St Thomas & Guys
- Nottingham



Revenue from Patient Usage for CBD Science Group PLC



Annual Revenue per Patient: £3,650

Patient Acquisition	Annual Revenue	Market Share
1,000	£3,650,000	0.05%
5,000	£18,250,000	0.25%
10,000	£36,500,000	0.5%
20,000	£73,000,000	1%

Product Price Comparables

FiercePharma

GW Pharma scores the industry's first NICE nods.... November 11, 2019 ^[10]

*"Epidiolex's list price in England is confidential until January 2020, and the company offered a discount to secure access. The drug carries a **list price of \$32,500 per patient per year in the U.S.**"*

Cannabis-based medicines: Two drugs approved for NHS... November 11, 2019 ^[11]

"It costs between £5,000 and £10,000 per patient each year... It is estimated there are 3,000 people with Dravet and 5,000 with Lennox Gastaut syndrome in England."



The UK Cannabis Report
December 2019^[12]

DRUG NAME	AVERAGE DAILY COST* [£]	AVAILABLE IN UK/IMPORT
Sativex	9.03	Available
Nabilone	39.2	Available
Epidiolex/ Epidyolex	27.11	Import
Dronabinol	28.36	Import
Dronabinol SYNDROS	234.675	Import
Bedica THC 2.0%	0.6	Import
Bedrolite CBD 10%	19.92	Import
Tilray 2:100 THC:CBD	11.515	Import
Avidekel™ 1:15 THC:CBD	40.945	Import

*Daily costs vary from patient to patient based on source of medication and dosage. doctor visits and VAT not included.
Source: Prohibition Partners/National Institute for Health and Care Excellence

Projected Market Valuation Based on Revenue

All figures are estimates in £

Projections	Year1	Year 2	Year 3	Year 4
Est. Patients by Yr End	1,000	5,000	10,000	20,000
Revenue (Turnover)	1,290,000	10,800,000	27,000,000	54,000,000
Expenses including G&A	2,220,000	4,880,000	5,720,000	6,720,000
Gross Profit	(930,000)	5,920,000	21,280,000	47,280,000
Revenue (Turnover)	1,290,000	10,800,000	27,000,000	54,000,000

	Revenue			Pre-revenue	
	GW Pharma	EMMAC	Khiron	Kanabo	Cellular
Revenue Multiplier	16x	38x	10x	£23.4 million Pre LSE IPO Valuation (02-Feb-21)	£20 million Pre LSE IPO Valuation (1-Feb-21)
Revenue (TTM)	£311,332,000	£5,392,000	£4,650,000		
Market Cap. Valuation as of August 2021	£ 5.1B*	£208M*	£52M	£90.39M	£34.83M

*Jazz agrees \$7.2bn deal for British cannabis pioneer GW Pharmaceuticals [12]

*EMMAC Life Sciences Group, has signed a definitive agreement to be acquired by Curaleaf Holdings, Inc. for approximately US\$285 million [13]

Use of Proceeds

We are raising £2,000,000 at 0.50/share investment for the following:

R&D and balance of Clinical Trial	800,000
Working Capital including Small Scale Production & Testing	1,200,000
Total	£ 2,000,000

Share Structure

Outstanding Shares	21,600,000
Ordinary Shares Offered	4,000,000
Post Raise Valuation	£ 12,800,000

Further Details

EIS Advance Approval gained from HMRC (**Ref: WMBC/IGR/415611548/VCRT**) which entitles UK tax paying investors to tax breaks on their investment as follows:

- **Income Tax:** Investors may receive a reduction in their income tax liability by 30% of the sums invested
- **Disposal Relief:** An investor qualifying for income tax relief on EIS shares is also entitled to an exemption from capital gains tax on a disposal of those shares
- **Inheritance Tax:** EIS shares are exempt from inheritance tax

Investor Contact

Dr. Michael Raymont
Chief Executive Officer

CBD Science Group PLC
82 Neal Street, Covent Garden, London,
WC2H 9PA

info@cbdsciencegroup.com
+44 7800900334

Corporate Advisors

Tej Mahil - Legal
Gunner Cooke
1 Cornhill, London, EC3V 3NDT
Tejinder.Mahil@gunnercooke.com

NatWest
PO BOX 411
34 Henrietta Street
London, WC2E 8NL
Tel: +44 (0) 179 224 4609

Founders
Moonstruck Capital Inc
Gary Gill
Jagpal Family



Graeme McFarlane
Chief Commercial Officer

References

1. GOV.UK. 2021. *Government announces that medicinal cannabis is legal*. [online] Available at: <<https://www.gov.uk/government/news/government-announces-that-medicinal-cannabis-is-legal>> [Accessed 24 February 2021].
2. Fayaz A, Croft P, Langford RM, et al Prevalence of chronic pain in the UK: a systematic review and meta-analysis of population studies *BMJ Open* 2016;6:e010364. doi: 10.1136/bmjopen-2015-010364
3. Prohibition Partners. 2021. Prohibition Partners. [online] Available at: <<https://prohibitionpartners.com/>> [Accessed 21 February 2021].
4. Research, M., Activity, R. and Trends, M., 2021. Europe Cannabis Market Forecast to 2027 – COVID-19 Impact and Country Analysis – by Product Type ; Application ; Compound, and Country. [online] Reportlinker.com. Available at: <https://www.reportlinker.com/p05953765/Europe-Cannabis-Market-Forecast-to-COVID-19-Impact-and-Country-Analysis-by-Product-Type-Application-Compound-and-Country.html?utm_source=GNW> [Accessed 24 February 2021].
5. *Medical cannabis in the United Kingdom (UK) - Statistics & Facts | Statista*. (n.d.). Retrieved February 24, 2021, from <https://www.statista.com/topics/6200/medical-cannabis-in-the-uk/>
6. *Europe Cannabis Market Forecast to 2027 – COVID-19 Impact and Country Analysis – by Product Type ; Application ; Compound, and Country*. (n.d.). Retrieved February 24, 2021, from <https://www.globenewswire.com/fr/news-release/2020/11/13/2126650/0/en/Europe-Cannabis-Market-Forecast-to-2027-COVID-19-Impact-and-Country-Analysis-by-Product-Type-Application-Compound-and-Country.html>
7. Amber Moore, Conservative Drug Policy Reform Group. (n.d.). Public Attitudes To Drugs In The Uk Contents. Retrieved February 24, 2021, from <https://static1.squarespace.com/static/5bbb29273560c345fcc0fade/t/5d6d287bf37f2400019d35fd/1567434878163/Attitudinal+Survey+Report+FINAL.pdf>
8. Fayaz, A., Croft, P., Langford, R. M., Donaldson, L. J., & Jones, G. T. (2016). Prevalence of chronic pain in the UK: a systematic review and meta-analysis of population studies. *BMJ Open*, 6(6). <https://doi.org/10.1136/bmjopen-2015-010364>
9. GW Pharma scores the industry's first NICE nods for cannabis-based medicines | FiercePharma. (n.d.). Retrieved February 24, 2021, from <https://www.fiercepharma.com/pharma/gw-pharma-scores-first-nhs-england-recommendations-for-cannabis-based-medicines>
10. Cannabis-based medicines: Two drugs approved for NHS - BBC News. (n.d.). Retrieved March 1, 2021, from <https://www.bbc.co.uk/news/health-50351868>
11. Prohibition Partners. (2020). The UK Cannabis Report. [online] Available at: <<https://prohibitionpartners.com/>> [Accessed 21 February 2021].
12. Jazz agrees \$7.2bn deal for British cannabis pioneer GW Pharmaceuticals | Financial Times. (n.d.). Retrieved February 24, 2021, from <https://www.ft.com/content/87e56362-09af-44e3-b2ff-7a7c51f29374>
13. Curaleaf to Enter European Cannabis Market with Acquisition of EMMAC Life Sciences Limited – Europe's Leading Independent Cannabis Company. (n.d.). Retrieved April 9, 2021, from <https://www.emmac.com/curaleaf-to-enter-european-cannabis-market-with-acquisition-of-emmac-life-sciences-limited-europes-leading-independent-cannabis-company/>